

Cabins



Hidden places, stylish spaces



Contents

Introduction

Extreme shelter design for extreme winters | Slovenia

Minimal Nordic tailoring for “hyggelig” comfort and design | United States

Snowboarders’ retreat anchored into the rock bluff | Canada

Project credits

Extreme shelter design for extreme conditions

This spectacular cabin and site enjoys 360-degree views over Slovenia and Italy, with stunning views to Triglav, Soca Valley, and the Adriatic Sea. The rugged terrain is full of caves and abysses, making the site accessible only to hikers, climbers, cavers, mountaineers, and via helicopter by nature lovers and romantics alike.

This self-contained wooden shell is designed to resist the extremely challenging conditions on top of the mountain. Snow cover lasts more than half the year, and the region is known for its ferocious rainstorms and winds, earthquakes, and landslides, so the structural design maximizes shelter stability with a minimal impact on the ground.

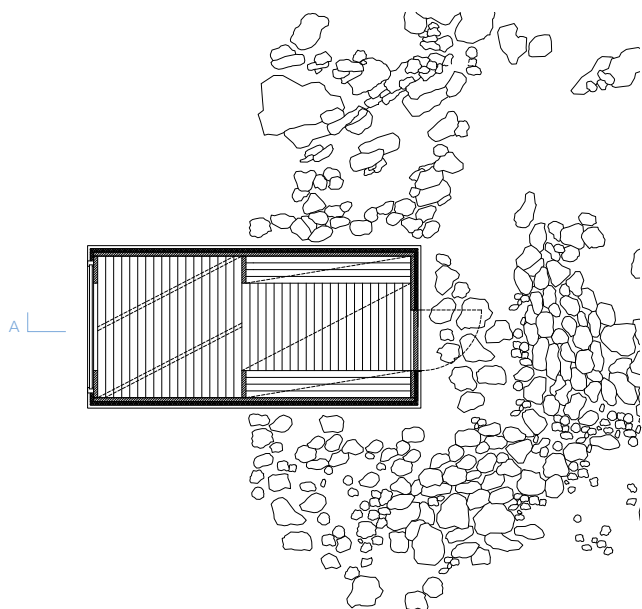
The cabin is a compact wooden volume organized with three floor resting platforms. These platforms hang towards the valley and a large glazed panoramic window offers astonishing views. A cantilevered overhang, resting part of the cabin, comprises the smallest footprint on the rock. The interior design dictates modesty, subordinate to the function, providing accommodation for up to nine mountaineers.



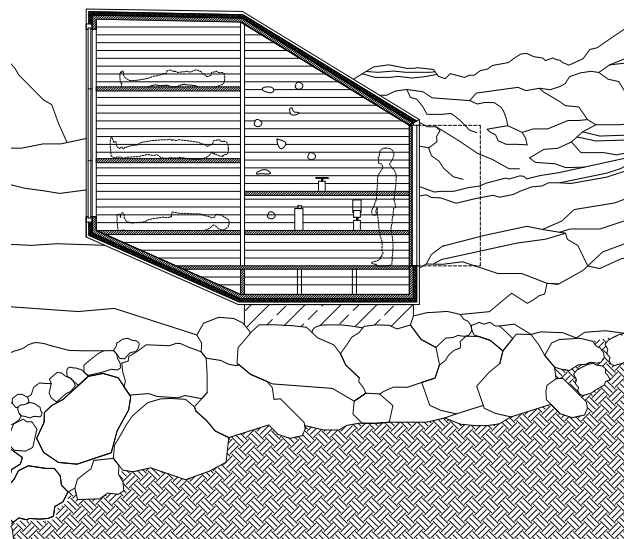
Kanin Winter Cabin (2016) @ Mount Kanin, Slovenia







Floor plan



AA Section









Minimal Nordic tailoring for “hyggelig” comfort and design

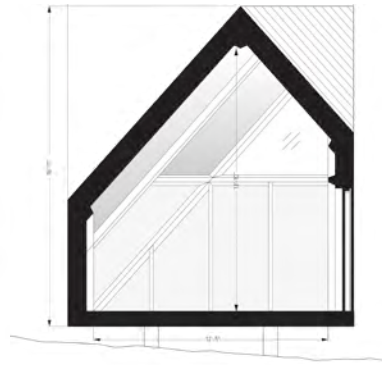
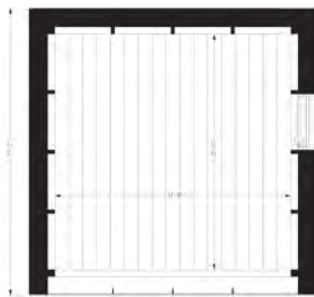
The design of this traditional A-frame structure, known for its pitched roof and angled walls for easy rain run-off, has evolved into a stunning crystal-like shape. To maximize the qualities of this classic structure, Klein comprises a more usable floor area: it takes the square base and twists the roof 45 degrees to raise the tiny home to a soaring 13 feet (4 meters). A triangular floor-to-ceiling window, featuring seven glass pieces, allows natural daylight to illuminate the interiors, with the resulting faceted shape giving the cabin an ever-changing appearance. Inside, the space reflects a minimal Nordic home that is prioritized for *hyggelig* comfort and design. Consisting 100 percent recyclable materials, from the exposed timber frame in solid pine, the cedar-wood bathroom, the Douglas fir floor and customizable space-grade, insulating natural cork walls, this cabin brings nature inside. An elegant Morsøe wood-burning fireplace is nestled in one corner while off-the-grid equipment is tucked away in the back. A petite kitchen designed by Københavns Møbelsnedkeri, handcrafted furniture from Carl Hansen and a bed fitted with Kvadrat fabric designed by Soren Rose Studio are some of the beautifully tailored Nordic flourishes that adorn the cabin.



Klein (2018) @ Upstate New York, United States













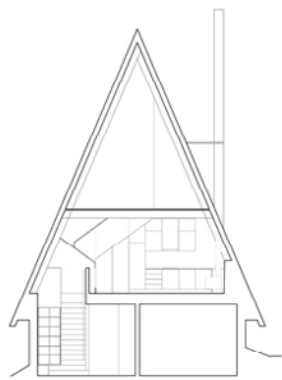
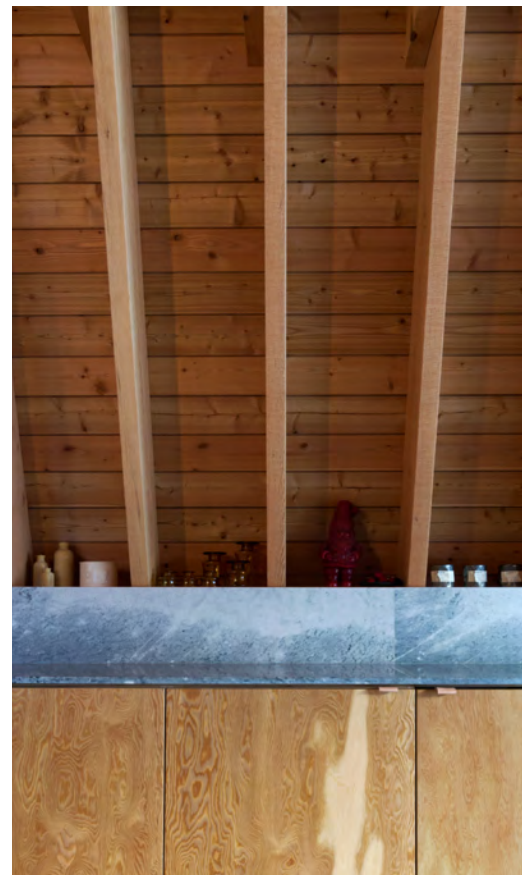
Snowboarders' retreat anchored into the rock bluff

This small-scaled weekend retreat for a family of snowboarders sits snugly on a steeply sloping rock bluff in a quiet residential area north of Whistler village. Banking into the rock the cabin is entered from the lowest level, which contains a gear drying room, winter and summer equipment storage, a washroom, and laundry. The living area and kitchen backs into the hill, and a fully glazed facade provides unobstructed views to the mountains across the valley over Green Lake. A bedroom, bunk room and guest room/den are on the top floor with expansive outward views east; this floor also accesses a private terrace nestled into the rock bluff behind the cabin.

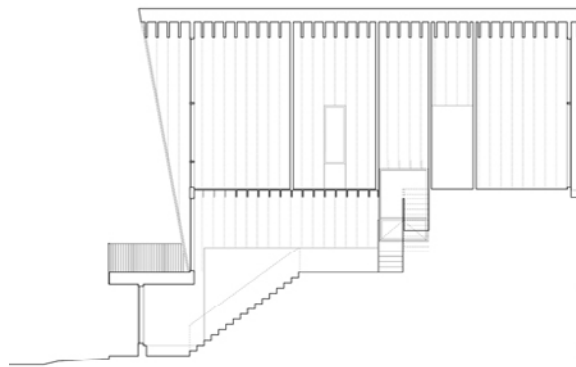
The structure consists of an internally exposed frame of Douglas fir rough-sawn lumber with solid strip structural decking, which sits on the concrete base anchored into the bedrock. The lumber joinery has been designed and engineered to utilize a simple repeated lapped joint at the floor and roof connections. The lap is reversed outward to allow for window dormers at the stair, bunk room and kitchen. The cabin materials are locally harvested and quarried, including the exterior's red cedar shingles (selected to weather to the tone of the surrounding rock) and the interior cabinetry is designer-built in warm plywood tones and paired with countertops fabricated from local marble.



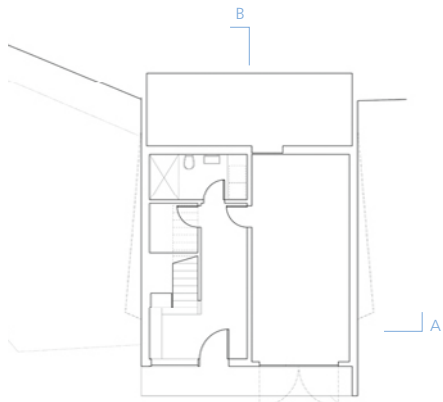
Whistler Cabin (2016) @ Whistler, Canada



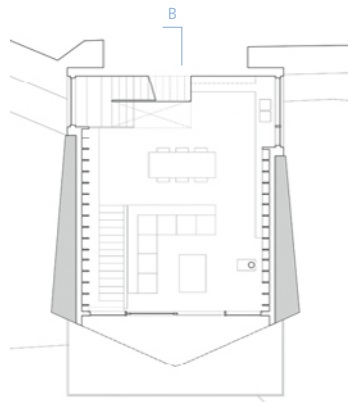
AA Section



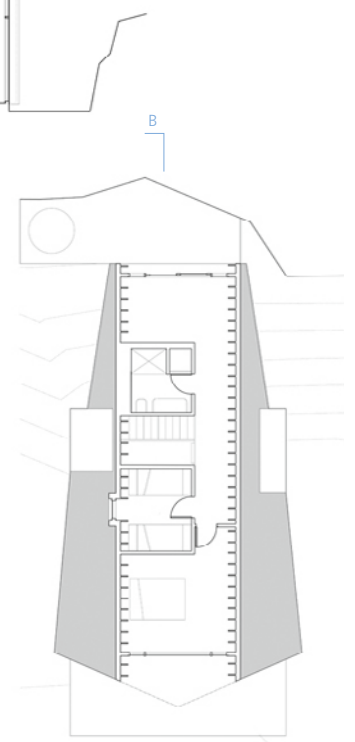
BB Section



Ground-floor plan



First-floor plan



Second-floor plan













PROJECT CREDITS

00-000 Extreme shelter design for extreme conditions

Kanin Winter Cabin | OFIS arhitekti

|| www.ofis-a.si

Location Mount Kanin, Slovenia

Completed 2016

Structural engineering & principal contractor

CBD Contemporary Building Design

General contractors Jerman d.o.o.; Permiz d.o.o.

Collaborators PD Bovec; PZS Planinska zveza

Slovenije; Turistično društvo Bovec

Area 104 ft² (9.7 m²)

Photography Ales Gregoric; Janez Martincic

00-000 Minimal Nordic tailoring for “hyggelig” comfort and design

Klein | BIG | Bjarke Ingels Group || www.big.dk

Location Upstate New York, United States

Completed 2018

Client Klein

Collaborators Soren Rose Studio, Dinesen,

Morsø, Gagganau, Kvadrat, Carl Hansen & Søn,

Suite New York, Københavns Møbelsnedkeri,

XAL, Vola

Area 183 ft² (17 m²)

Photography Matthew Carbone

00-000 Snowboarders’ retreat anchored into the rock bluff

Whistler Cabin | Scott & Scott Architects ||

www.scottandscott.ca

Location Whistler, Canada

Completed 2016

Structural engineering WHM

Contractor Cloudy Mountain Contracting

Area 1,900 ft² (178 m²)

Photography Scott and Scott Architects