

144 GEOMETRY GLOBAL OFFICE HAMBURG GERMANY PLY STUDIO 2014

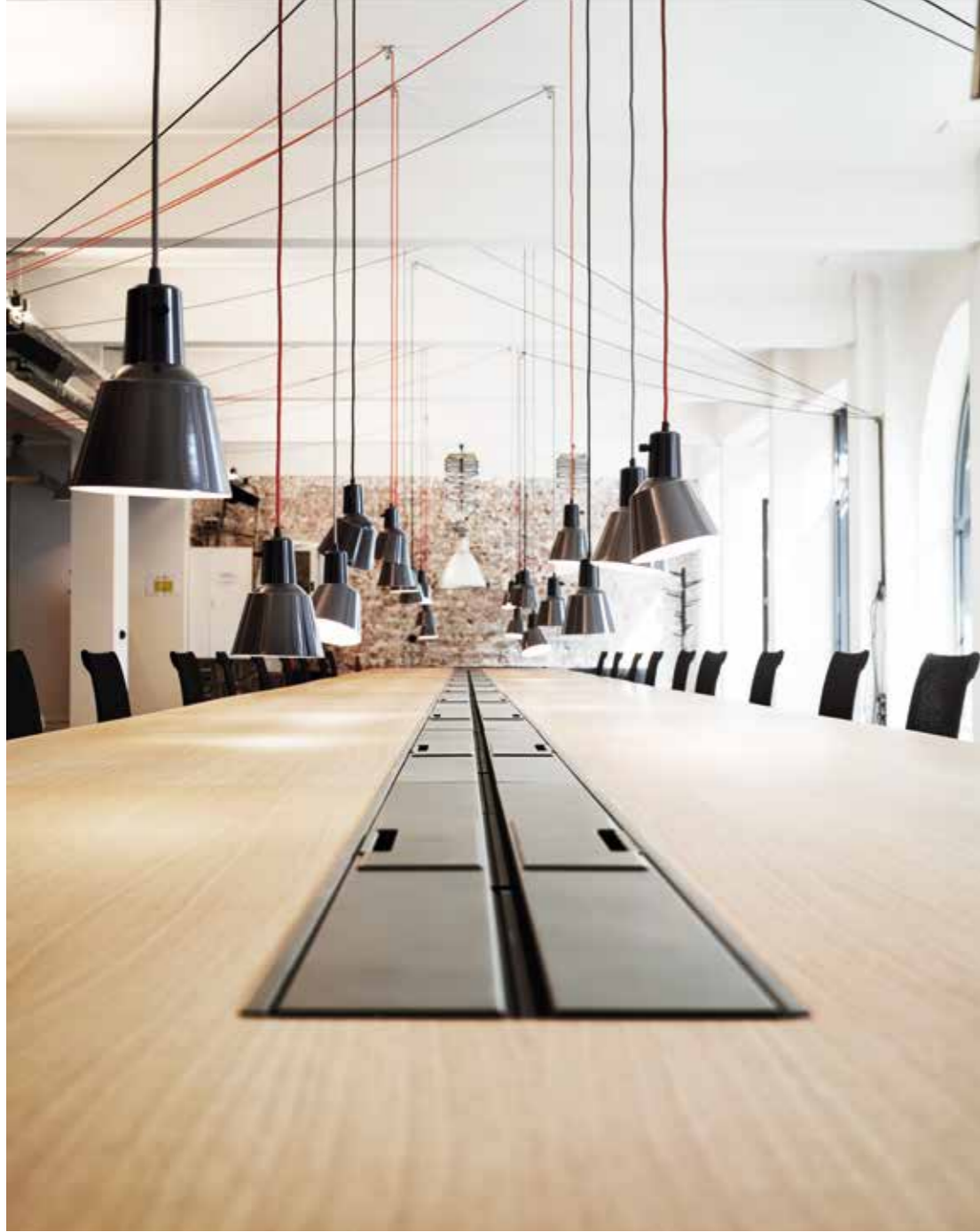


This 2,000-square-meter open space office was developed for the Hamburg branch of Geometry Global, a brand activation agency. A key focus of the design was the creation of a large open space that also offered a range of different rooms for retreat, formal meetings, casual meetings and open meetings, as well as an arena, a library and a number of kitchens and lounge areas. The design meets all the prerequisites for an open and accepting working culture. The interior design emphasizes the agency's open-minded thinking and working principles, as well as uniting the various fields of work disciplines. The original floor planning comes from the Stuttgart office HaasCook-Zemrich, design, further development and implementation was then carried out by PLY. PLY was also responsible for the furnishings and lighting concept.

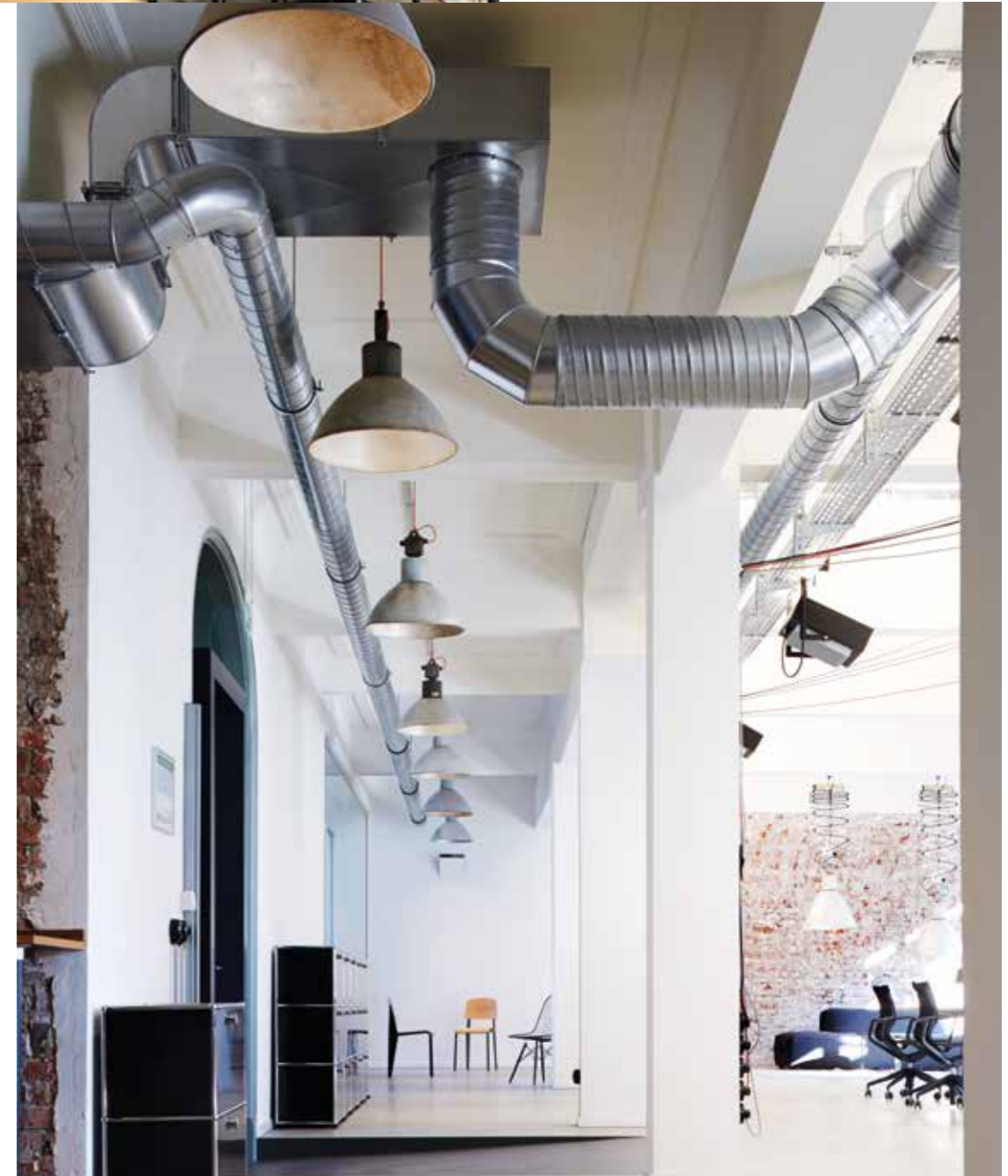
Consectetur, nisl non molestie facilis, massa ligula consectetur sem, vitae semper orci nulla in justo. Quisque semper, arcu ut pellentesque pulvinar.



Ut ultricies lorem ut mi. Praesent vel augue. Donec interdum. Maecenas in lorem vitae nibh pretium convallis. Ut ultricies lorem ut mi. Praesent vel augue. Donec interdum. Maecenas in lorem vitae nibh pretium convallis.

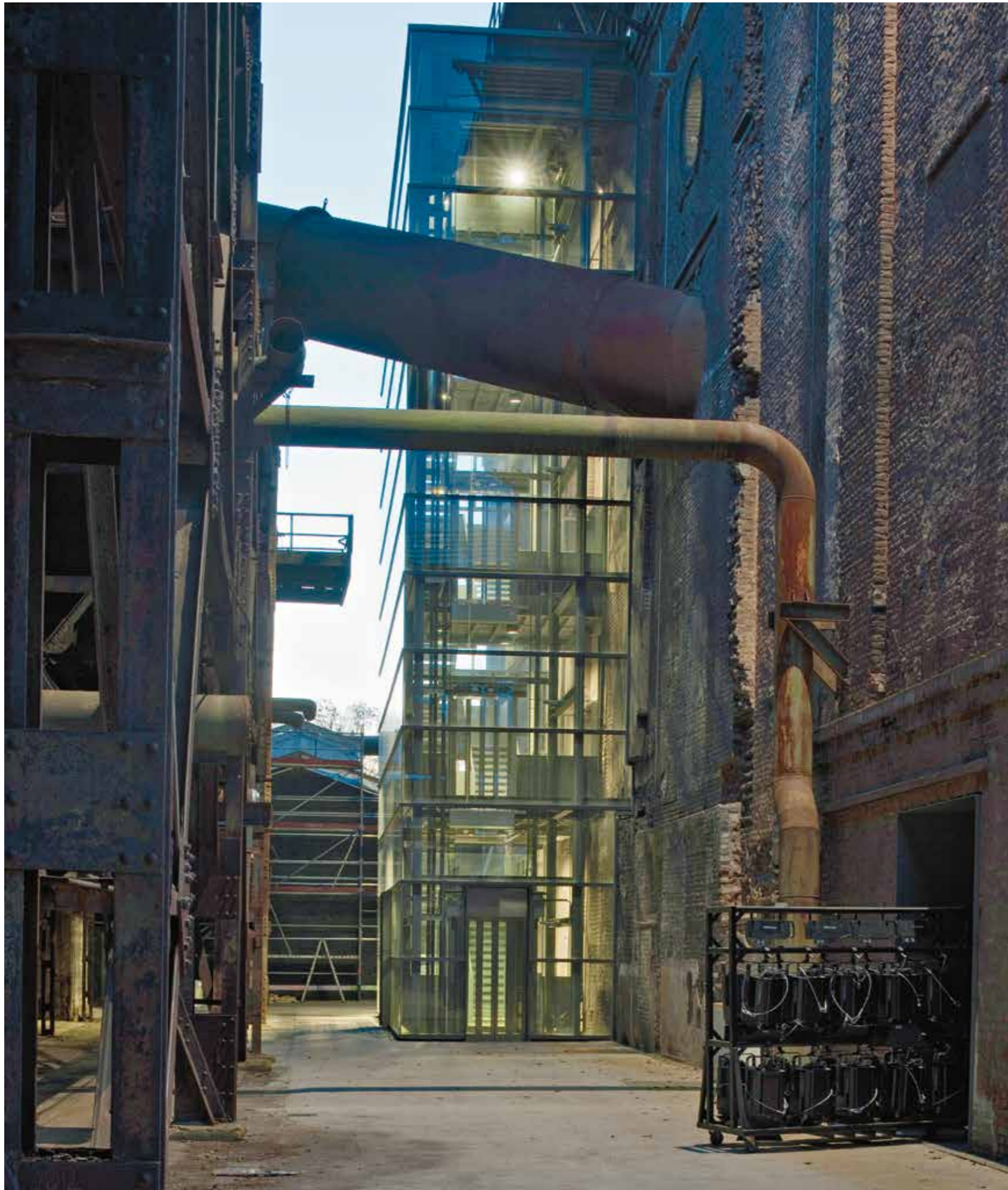


Vivamus elementum semper nisi. Aenean vulputate eleifend tellus. Aenean leo ligula, porttitor eu, consequat vitae, eleifend ac, enim.



NOW: DOLOR SIT AMET, CONSECTETUER ADIPISCING ELIT. SUSPENDISSE NULLA NISL, DAPIBUS EGESTAS, MOLESTIE MATTIS, EUISMOD QUIS, MAGNA. DONEC URNA LEO, TRISTIQUE ET

PAST: AUCTOR AC, RISUS. NUNC SOLLICITUDIN ANTE AC TELLUS. SED RUTRUM TEMPUS SEM. ETIAM PORTA VARIUS ARCU. VESTIBULUM ULLAMCORPER ARCU IN DOLOR. IN PHARETRA. NULLA TRISTIQUE DOLOR SIT AMET LOREM BLANDIT CONDIMENTUM. SED AT NISL. ALIQUAM MOLESTIE PURUS.



210
**REHEARSAL
STAGE
BOCHUM
GERMANY
HEINRICH
BÖLL
ARCHITEKT
2011**



Ut ultricies lorem ut mi. Praesent vel augue. Donec interdum. Maecenas in lorem vitae nibh pretium convallis.

The steam blower hall of a former steel mill is located in the immediate vicinity of the Jahrhunderthalle, the central venue of the Ruhrtriennale, the annual regional music and arts festival. The listed building was fitted with two rehearsal rooms as well as storage areas for the stage equipment. Its structure consisted primarily of solid reinforced masonry walls that enclosed a narrow and high space from three sides covered with a timber roof. This is topped to this day by an elevated water tank.

The reutilization concept added new ceilings in such a way that the required useful spaces were created and the original room height was kept intact in some parts. A new access tower was added on the outside, while the walls remained almost untouched to tell of many years of industrial use. Suspendisse bibendum ipsum a elit. Donec viverra lacus a erat. Cras consectetur, nisl non molestie facilisis, massa ligulaconsectetur sem, vitae semper orci nulla in justo. Quisque semper, arcu ut pellentesque pulvinar, diam justo feugiat lacus, ut semper erat.

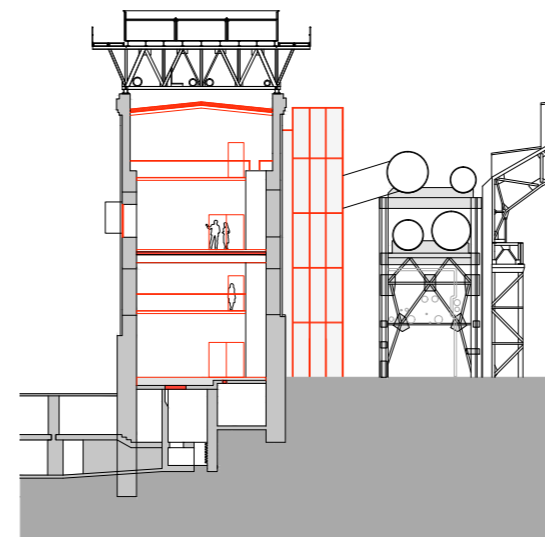


211



NOW: DOLOR SIT AMET, CONSECTETUER ADIPISCING ELIT. SUSPENDISSE NULLA NISL, DAPIBUS EGESTAS, MOLESTIE MATTIS, EUISMOD QUIS, MAGNA. DONEC URNA LEO, TRISTIQUE ET

PAST: AUCTOR AC, RISUS. NUNC SOLLICITUDIN ANTE AC TELLUS. SED RUTRUM TEMPUS SEM. ETIAM PORTA VARIUS ARCU. VESTIBULUM ULLAMCORPER ARCU IN DOLOR. IN PHARETRA. NULLA TRISTIQUE DOLOR SIT AMET LOREM BLANDIT CONDIMENTUM. SED AT NISL. ALIQUAM MOLESTIE PURUS.



Praesent vel augue. Donec interdum. Maecenas in lorem vitae nibh pretium convallis. Nam fringilla augue ut magna. Nam condimentum bibendum tortor. Ut euismod ipsum.

