

For many people it is increasingly important to be able to move easily, to be able to react spontaneously to personal desires or life changes of all kinds. Because of the needs to both preserve one's identity that is rooted in one's home and to be more geographically mobile, the market for "movable" houses has grown and diversified. As much as concept, appearance and construction might vary greatly from house to house, what unites all of the projects presented in this volume is the claim to a design that is both larger than life and consistently compelling.

This sales blad contains sample pages in miniature.  
The full specification for the book itself is:

Sibylle Kramer  
**Nomadic Living. Relocatable Residences**  
English  
Hardcover  
24 x 24 cm | 9 ½ x 9 ½ in.  
272 pages  
400 illustrations  
ISBN 978-3-03768-227-2

Braun Publishing AG  
Arenenbergstrasse 2 | 8268 Salenstein | Switzerland  
Tel +41.44.586 11 97 | Fax +41.71.664 31 32  
info@braun-publishing.ch | www.braun-publishing.ch

Nomadic Living Relocatable Residences

Nomadic Living



# Nomadic Living

## Relocatable Residences

Sibylle Kramer



# ÁPH80 Huesca, Spain

Architect: Ábaton Arquitectura  
Interior design: Estavia  
Project address: Huesca, Aragon, Spain  
Gross floor area: 27 m2  
Completion: 2013



13



16

ÁPH80

ÁPH80 contains three different spaces measuring a total of 27 square meters. A living room / kitchen, a bathroom and a double bedroom. The gabled roof is 3.5 meters in height. Most of the materials used can be recycled and meet sustainable criteria that Ábaton applies to all of its projects. The use of wood throughout the building not only gives the design a sense of harmony and balance, it is also hypoallergenic. The sourced wood comes from regulated forests. Simple yet elegant furnishings have been used, giving the living space a high-quality feel and making it appear less like a temporary space.



17



14

ÁPH80



15

Developed by Ábaton, the ÁPH80 series has been designed to serve as a dwelling for two people. It can be easily transported by road and can be placed pretty much anywhere. The proportions are the result of a thorough investigation carried out by the architects and have been designed to make the dif-

ferent spaces recognizable. The structure is simple yet sturdy, built of materials chosen for their comfort and practicality. ÁPH80 embodies Ábaton's principles and objectives: creating a sense of wellbeing, environmental balance and emphasizing simplicity. This building is not only a monolithic monument, it conta

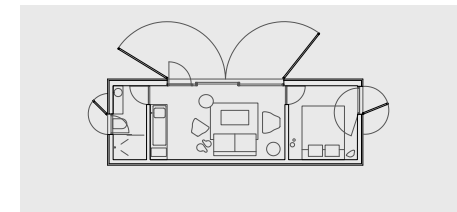


18

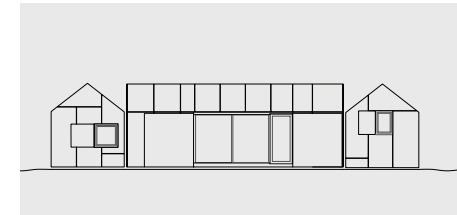
ÁPH80

The front features a large floor-to-ceiling window to maximize the exposure to daylight.

The large glass doors can be either kept completely open or can be covered with wooden outer doors during transportation. When opened, the doors allow light to flood into the small space and also offer easy access to the outside, transforming the surroundings into one massive garden. Large doors blur the boundaries between the outside and the inside.



Floor plan



Elevation

Energy Concept: solar panels  
Rooms: 3  
Living Room / cooking: 12.5 m2  
Bedroom: 6.4 m2  
Bathroom: 3.1 m2  
Setting: rural

19