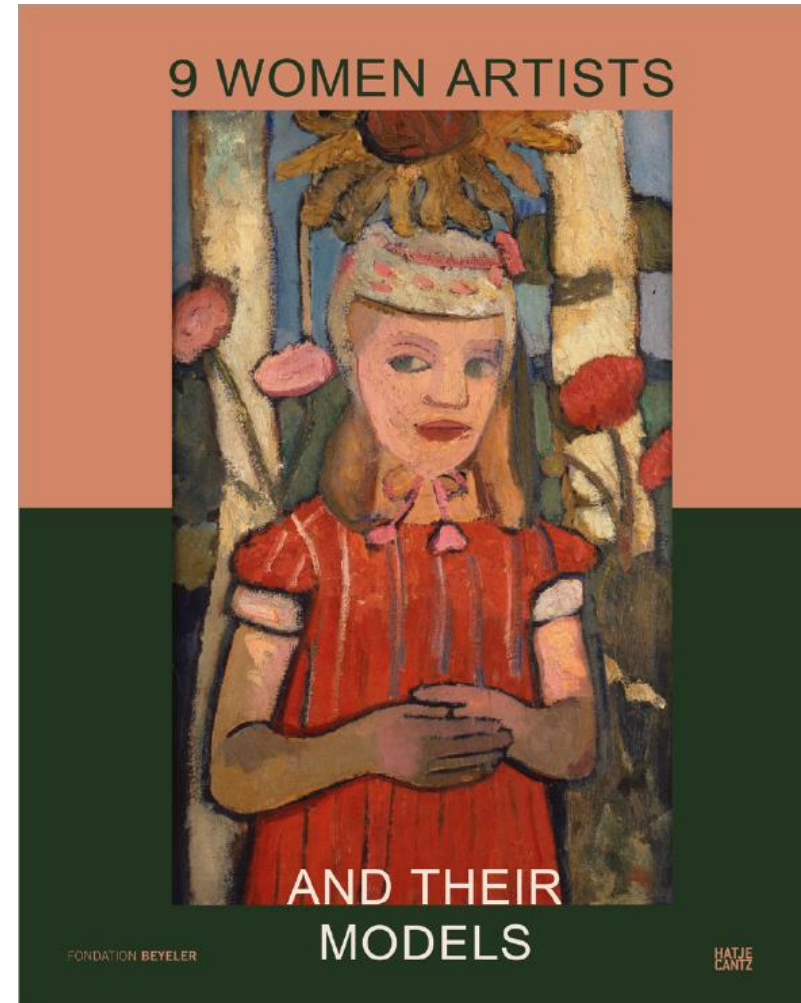


9 WOMEN ARTISTS AND THEIR MODELS

Women Artists in relation to their models

- EDITORS Fondation Beyeler, Riehen/Basel, Theodora Vischer
- TEXTS Tere Arcq and Hilda Trujillo, Andreas Beyer, Tamar Garb, Peter Geimer, Anna-Carola Krause, Sylvie Patry, Uwe M. Schneede, Jennifer Thompson, Theodora Vischer
- GRAPHIC DESIGN Teo Schifferli
- ca. 208 pp. • 250 ill. • 24.5 x 30.5 cm • hardcover
- ca. €58,00, \$68.00, £58.00
- ISBN ISBN 978-3-7757-4757-8 (English)
- ISBN 978-3-7757-4756-1 (German)
- September 2020



EXHIBITION

Fondation Beyeler, Riehen/Basel,
September 27, 2020–January 31, 2021

**HATJE
CANTZ**

Key Sales Points

- Nine strong women artists, from the modernist era to today
- The female gaze over the course of time
- Catalogue for the fall exhibit at the Fondation Beyeler

FEATURES ARTISTS

Berthe Morisot

Mary Cassatt

Paula Modersohn-Becker

Lotte Laserstein

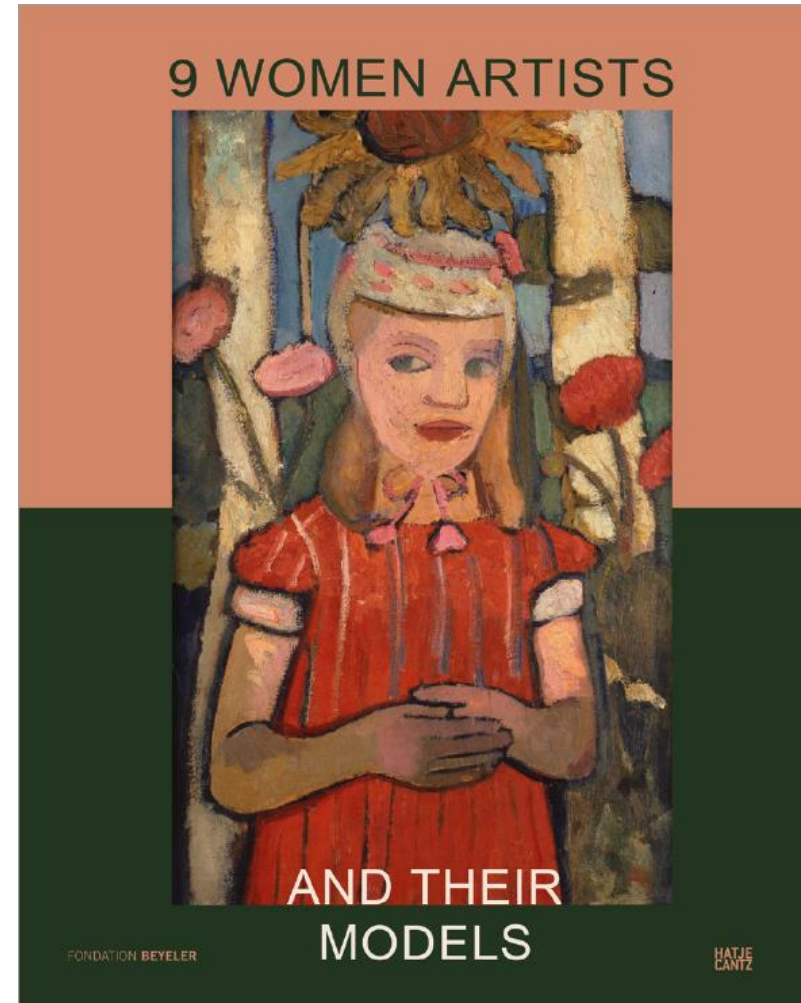
Frida Kahlo

Alice Neel

Marlene Dumas

Cindy Sherman

Elizabeth Peyton

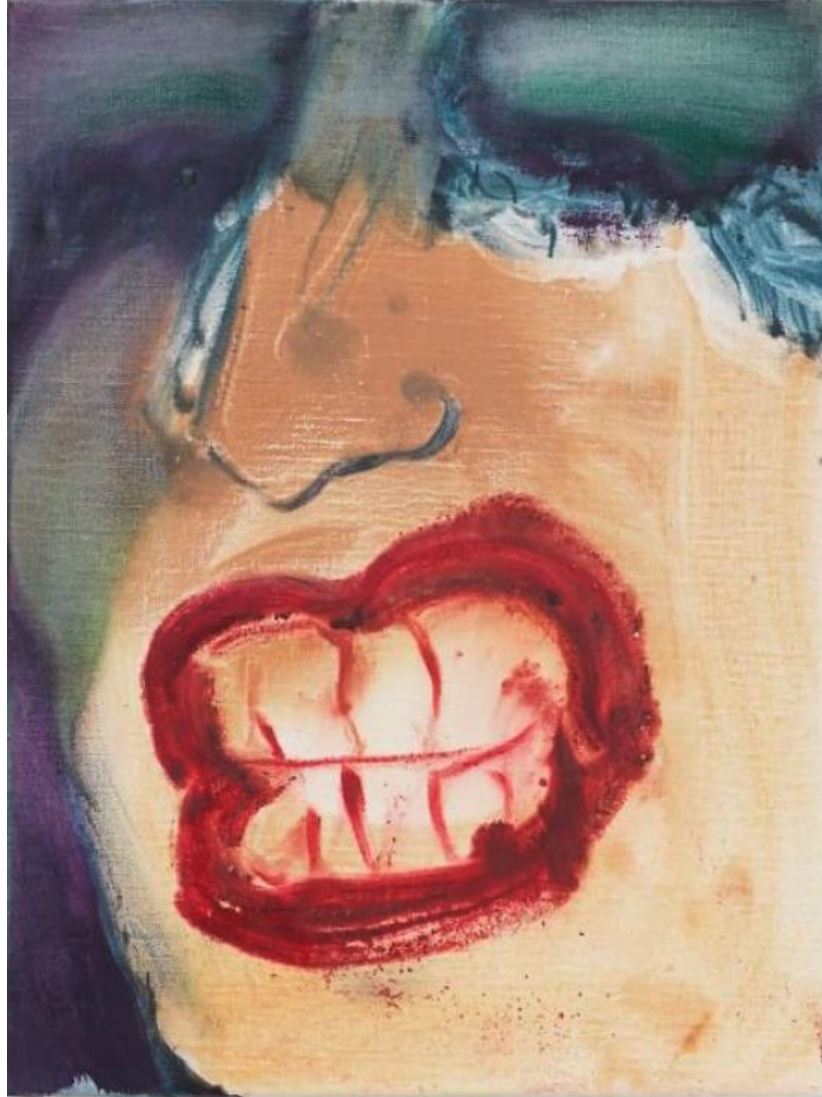


EXHIBITION

Fondation Beyeler, Riehen/Basel,
September 27, 2020–January 31, 2021

**HATJE
CANTZ**

Insights



**HATJE
CANTZ**

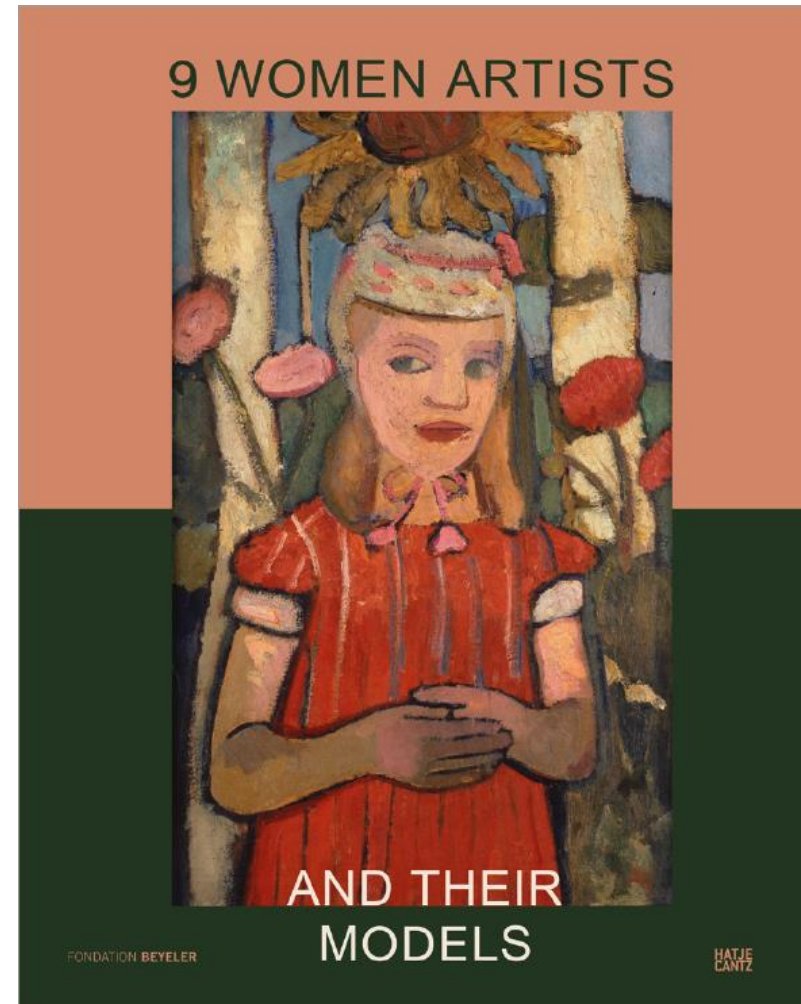
Insights



**HATJE
CANTZ**

9 WOMEN ARTISTS AND THEIR MODELS

- EDITORS Fondation Beyeler, Riehen/Basel, Theodora Vischer
- TEXTS Tere Arcq and Hilda Trujillo, Andreas Beyer, Tamar Garb, Peter Geimer, Anna-Carola Krausse, Sylvie Patry, Uwe M. Schneede, Jennifer Thompson, Theodora Vischer
- GRAPHIC DESIGN Teo Schifferli
- ca. 208 pp. • 250 ill. • 24.5 x 30.5 cm • hardcover
- ca. €58,00, \$68.00, £58.00
- ISBN ISBN 978-3-7757-4757-8 (English)
- ISBN 978-3-7757-4756-1 (German)
- September 2020



EXHIBITION

Fondation Beyeler, Riehen/Basel,
September 27, 2020–January 31, 2021

**HATJE
CANTZ**